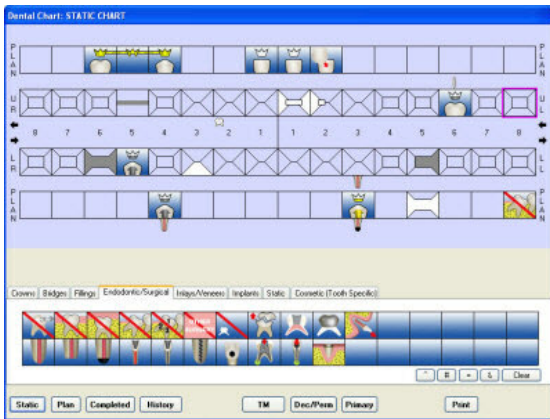


# WYSdom Rentals

## THE SCHEME

The WYSdom Rental scheme gives customers a fixed monthly cost for a fully inclusive Dental Practice system. All installation, set-up, training, hardware and software is included in a simple monthly charge, with ongoing support for the whole system also included.

This gives you guaranteed costs, fixed for the main rental period of three years with an offer of extending for a further three years with **no increase in price**. Customers who extend their contract have the benefit of full hardware replacement included, so giving a six year fixed cost in real terms.



## ICONic® SOFTWARE

WYSdom's ICONic® system is widely accepted to be the easiest to use software on the market with its image-based charting significantly reducing the learning curve for dentists, nurses and administrative staff alike.

With no complicated codes to remember charting is blisteringly fast and accurate and is coupled with a comprehensive Auto-notes feature.

## ALWAYS THE RIGHT HARDWARE

When it comes to hardware you need to be confident in the equipment supplied, so WYSdom always includes the very best as part of a rental package. All the equipment is commercial level so you know that it will continue to work even under continual heavy-duty use.

On the right you will see typical brands we use for our installations.

## KEY FEATURES

- Fixed all-inclusive monthly rental fee, guaranteed for up to six years
- Easy to learn image-driven charting
- Business quality hardware
- Brand new replacement hardware every three years
- One-stop-shop single point of contact hardware and software support



HP Computers



Hanns G Screens



Kyocera Mono Printers



HP Colour Printers



Zebra Card Printers



Draytek ADSL Routers





### **WHAT'S INCLUDED - HARDWARE**

Computer Server - dedicated for larger systems  
Reception & Surgery Computers  
Flat Screen Monitors  
Network Colour Inkjet Multi-Function Printer/Scanner/Copier  
Network Black & White Duplex (*prints both sides*) Laser Printer with second bin  
Network Mono Appointment Card Printer  
Broadband Router/Hub - additional hub(s) as required  
Back-Up System - USB sticks or External Drives- dependant on system size  
Web-cam • microphone • speaker set • all connection leads

### **WHAT'S INCLUDED - SOFTWARE**

ICONic® Dental Practice Software - including SMS and email integration  
Microsoft Server Software for dedicated servers  
Windows 7 operating system  
Office 2010 - Excel, Word, Outlook  
MySQL Database Engine  
F-Secure PSB Workstation Security



### **WHAT'S INCLUDED - INSTALLATION, SET-UP & TRAINING**

On-Site Installation of all necessary cabling and computer RJ45 points  
Set-Up of all software and hardware  
On-Site Installation of hardware  
On-Site & Web-Based Training as required

### **WHAT'S INCLUDED - MAINTENANCE & SUPPORT SERVICES**

Single point contact for any hardware or software problems, including dial-in diagnostics and on-site hardware technicians when required with replacement hardware service. ICONic® Software support is by ex-dental professionals.

### **RENTAL SCHEME COSTS**

*One Reception and One Surgery Computer - ~~£399 + VAT~~ per month - **\*Special offer £349 + VAT***  
*One Reception and Two Surgery Computers - ~~£459 + VAT~~ per month - **\*Special offer £409 + VAT***  
*One Reception and Three Surgery Computers - ~~£519 + VAT~~ per month - **\*Special offer £469 + VAT***  
*One Reception and Four Surgery Computers - ~~£579 + VAT~~ per month - **\*Special offer £529 + VAT***

**\*OFFER DISCOUNT OF £50 PER MONTH IS AVAILABLE FOR THE FIRST NEW CUSTOMER SIGNED EACH MONTH.**

**Make your practice ICONic® call 01908 324045 today**

WYSdom Dental Technologies  
29 Stratford Office Village · Walker Avenue · Wolverton Mill · Milton Keynes · MK12 5TW  
Tel: 01908 324045 · Fax: 01908 221651 · [www.wysdom.co.uk](http://www.wysdom.co.uk)